



**WATER
AGENCY**

Regional Groundwater Facilities Improvement Project

Project Update

Water Resources Committee

February 5, 2025

Outline

- Background
- Well Construction
- Community Outreach
- Next Steps
- Project Schedule
- Q & A



Strategic Plan Alignment



Initiatives

5

Develop a diversified water supply plan and implement supported projects and programs

9

Implement the PFAs Management Strategy

11

Manage the Groundwater Sustainability Agency and implement the Groundwater Sustainability Plan

Background





- Joint Project with City of Pleasanton to explore feasibility of new production wells
- Cost Share Agreement Executed – Aug 2024
- Drilling and Consultant Contracts Approved – Oct 2024
- Cost Share Agreement Amendment #1 – Nov 2024

Project Overview

- Drill exploratory borings and construct three test well at:
 1. Del Prado Park
 2. Pleasanton Tennis & Community Park
 3. Hansen Park
- Conduct Yield and Water Quality Testing at all sites
- Run Model Scenarios
- Basis of Design
- Feasibility Study

Legend

Wells

-  Approximate Test Well Location
-  Pleasanton - Inative
-  SFPUC - Active
-  Zone 7 - Active

Zone 7 Distribution Lines

-  Distribution Main
-  Proposed Distribution Expansion

Basin Regions

-  Main Basin
-  Fringe Area
-  Upland Area
-  SubBasins



Dublin Sub-basin

Tennis Park (Site 2)

Bernal Sub-basin
Hansen (Site 3)

Del Prado (Site 1)

Amador Sub-basin

Castle Sub-basin

SF-A

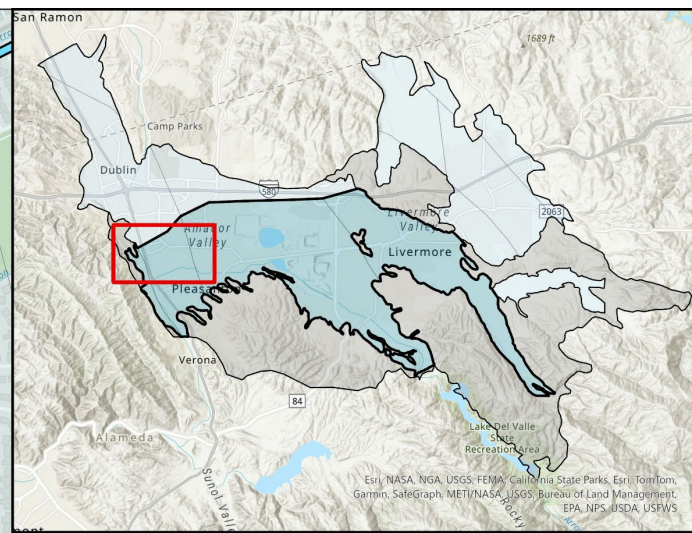
SF-B

P7


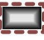
H6

H9

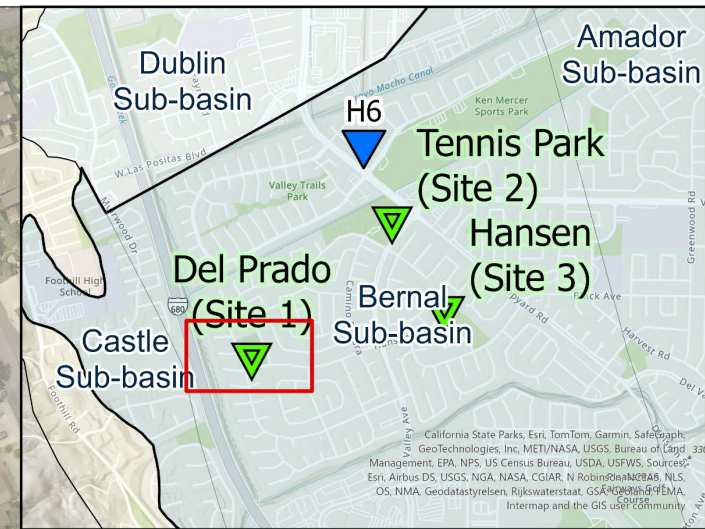
P9



Legend

-  Approximate Test Well Location
-  Approximate Construction Footprint

Del Prado Park (Site 1)



Esri, Community Maps Contributors, California State Parks, © OpenStreetMap, © Mapbox, © Esri, TomTom, Garmin, SafeGraph, GeoTechnologies, Inc., METI/NASA, USGS, Bureau of Land Management, EPA, NPS, US Census Bureau, USDA, USFWS, Sources: Esri, Airbus DS, USGS, NGA, NASA, CGIAR, N. Robinson, NCEAS, NLS, OS, NMA, Geodatastyrelsen, Rijkswaterstaat, GSA, Geoland, FEMA, Intermap and the GIS user community.

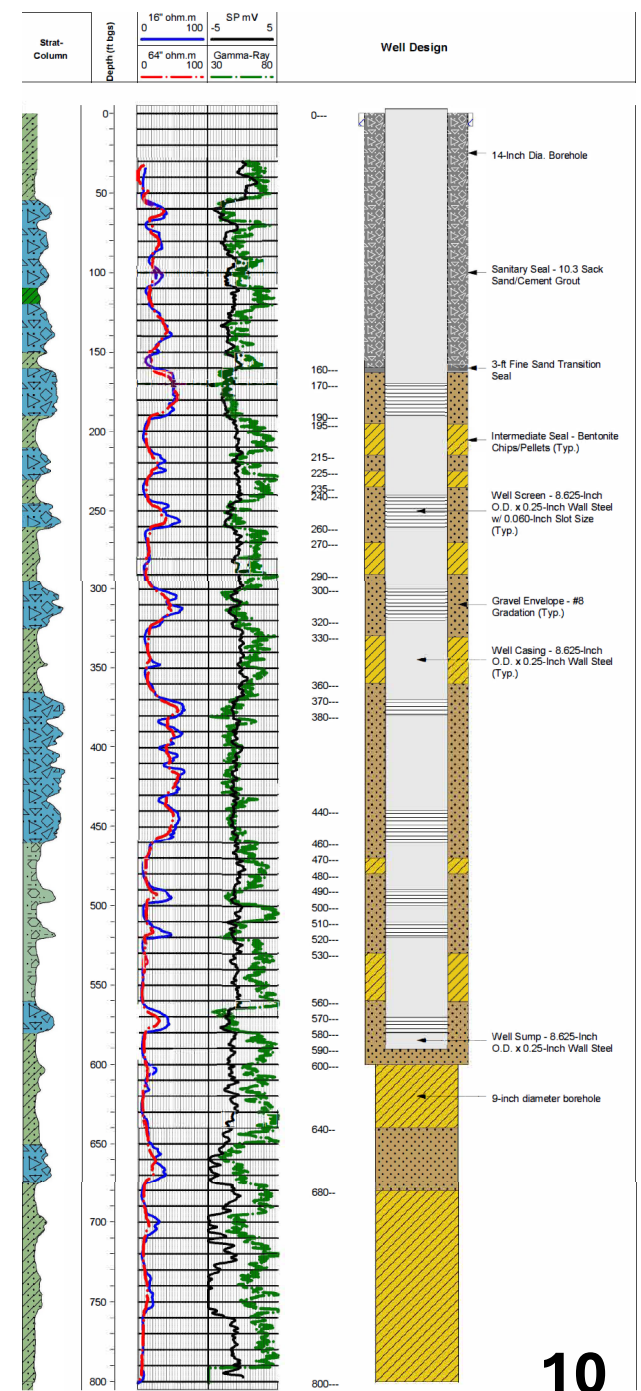
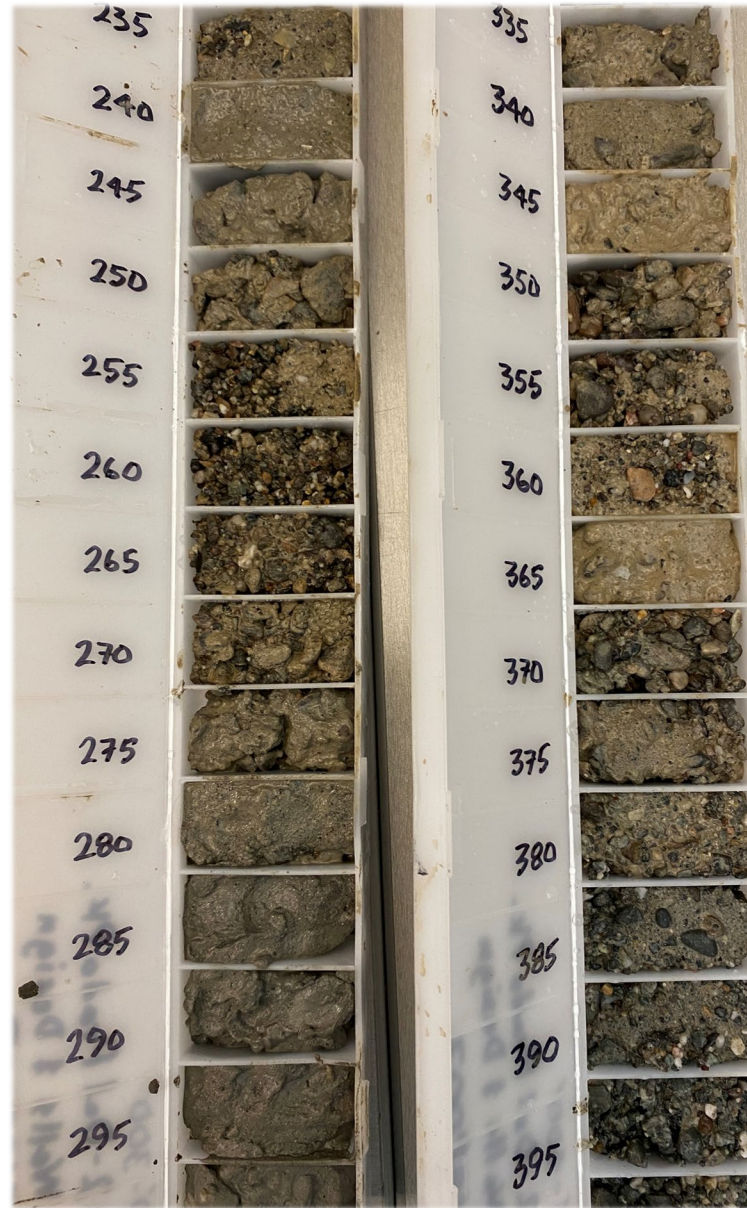
Mobilization



Exploratory Boring



Well Design



Borehole Preparation



Well Construction



Well Development



Well Completion & Site Restoration



Community Outreach

- City of Pleasanton leading the outreach effort – Zone 7 supporting
- Public meetings
- Stakeholder Workshops
 - Public Outreach Event at Tennis Park
 - City Water Open House (3/1/25)
- Website Collaboration
- Information Poster at Drilling Site

ZONE 7 WATER AGENCY

HOW WE WORK OUR WATER & SERVICES PROJECTS & REPORTS FOR BUSINESS

Joint Groundwater Wells Study

Providing Safe and Reliable Water, Today and Tomorrow

THE CITY OF PLEASANTON ZONE 7 WATER AGENCY

The Test Sites

- Pleasanton Tennis & Community Park
5801 Valley Avenue
- Del Prado Park
5196 Golden Road
- Hansen Park
5697 Black Avenue

Joint testing for new groundwater wells to ensure a safe, reliable local water supply. Existing wells are impacted due to per- and polyfluoroalkyl substances (PFAS) concentrations, making this project essential.

For more information, scan the QR Code or visit CityOfPleasantonCA.gov/wells

For project information, contact:
NorCal Pump & Well Drilling – Jeff Rossi: (559) 538-5022
Zone 7 Water Agency – Jacob Danielsen: (925) 454-5081
City of Pleasanton – Scott Peterson: (925) 931-5686

Regional Groundwater Facilities Project-Phase 1:
Test Well and Feasibility Study City of Pleasanton CIP 24174; Zone 7 Project No. 308-24

Next Steps

- Yield and Water Quality Testing – Del Prado Park
- Drilling exploratory boring and well construction –
Tennis and Community Park
- Data from Testing input into Model

Overall Project Schedule

Task	Dec	Jan	Feb	Mar	Apr	May	Jun	Jul	Aug	Sep	Oct
Drilling & Well Testing	[Dark Blue Bar]										
Del Prado: Drilling/Well Construction	[Light Blue Bar]										
Del Prado: Well Testing			[Light Blue Bar]								
Tennis Park: Drilling/Well Construction			[Light Blue Bar]								
Tennis Park: Well Testing				[Light Blue Bar]							
Hansen: Drilling/Well Construction				[Light Blue Bar]							
Hansen: Well Testing						[Light Blue Bar]					
GW Model Project Support				[Dark Blue Bar]							
GW Model Calibrations				[Light Blue Bar]		[Light Blue Bar]		[Light Blue Bar]			
GW Modeling Feasibility Scenarios							[Light Blue Bar]				
Test Well Findings Report								[Dark Blue Bar]			
Feasibility Report								[Dark Blue Bar]			

Today

Q&A

