



# **Zone 7 Water Agency Board Meeting**

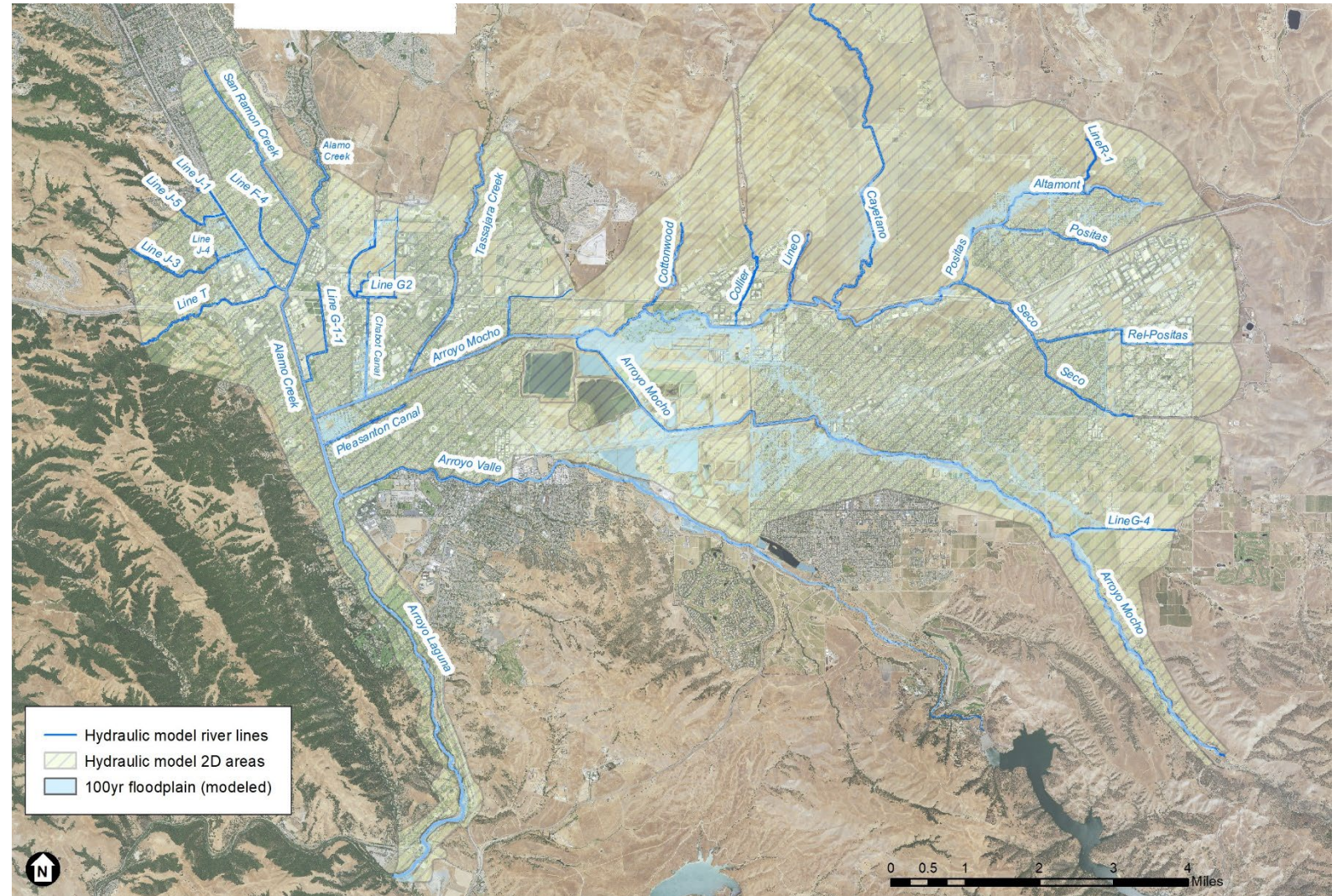
## **Flood Management Plan Phase 2a**

**February 15, 2023**

# Flood Management Plan (FMP) Phase 2a

## Agenda

- I. Phase 2a approach
- II. FMP Goals and Objectives
- III. Systemwide evaluation
- IV. Proactive Maintenance Guidance
- V. Outreach and Engagement
- VI. Schedule and Fee



# FMP Phase 2a: Overview

- Composed of 3 major efforts
  - Quantifies risks of the flood protection system and recommends a plan
  - Provides a risk-informed, quantifiable basis for proactive maintenance
  - Initiates and conducts outreach and engagement with stakeholders and the public
- First step of incremental, prioritized approach to Phase 2
- Founded on:
  - Phase 1—strategic blueprint for Zone 7 flood management
  - Zone 7 Strategic Plan

# FMP Recap:

- The FMP Implements:
  - Strategic Plan Goal D – Provide an Effective System of Flood Protection
  - Strategic Plan Initiative No. 10 – Update the Flood Protection Strategy
- Goals and Objectives adopted in FMP Phase 1 are composed of:
  - Risk-informed capital improvement
  - Risk-informed enhancement of operations and maintenance
  - Overlap of Capital and O&M

# Approach to Phase 2a

## Phase 2a:

- Addresses Goals and Objectives 1.1, 1.2, 2.1, 6.1, 6.3, 7.1
- Supports Goals and Objectives 3.1, 3.2, 3.3, 4.1
- Lots of Capital and O&M overlap
- Interrelated deliverables complemented/supplemented by ongoing Zone 7 work
- Three major tasks comprise Phase 2a:

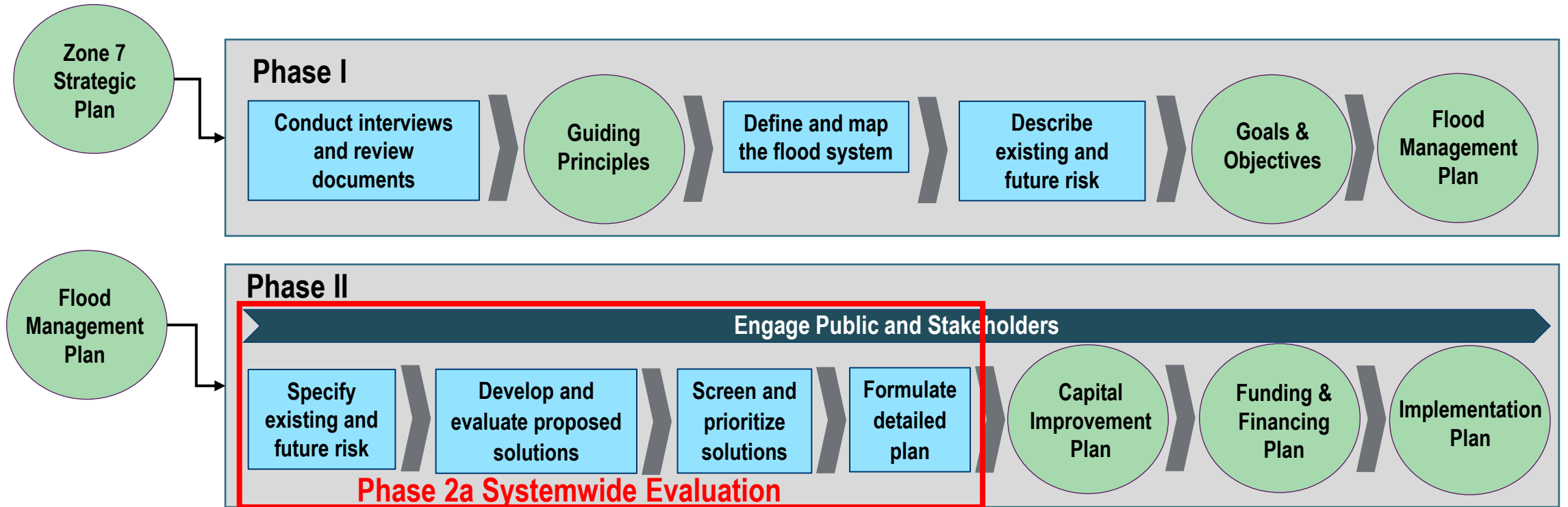
Systemwide Evaluation (Capital Improvement)

Proactive Maintenance Guidance (O&M)

Stakeholder and Public Engagement (Everything)

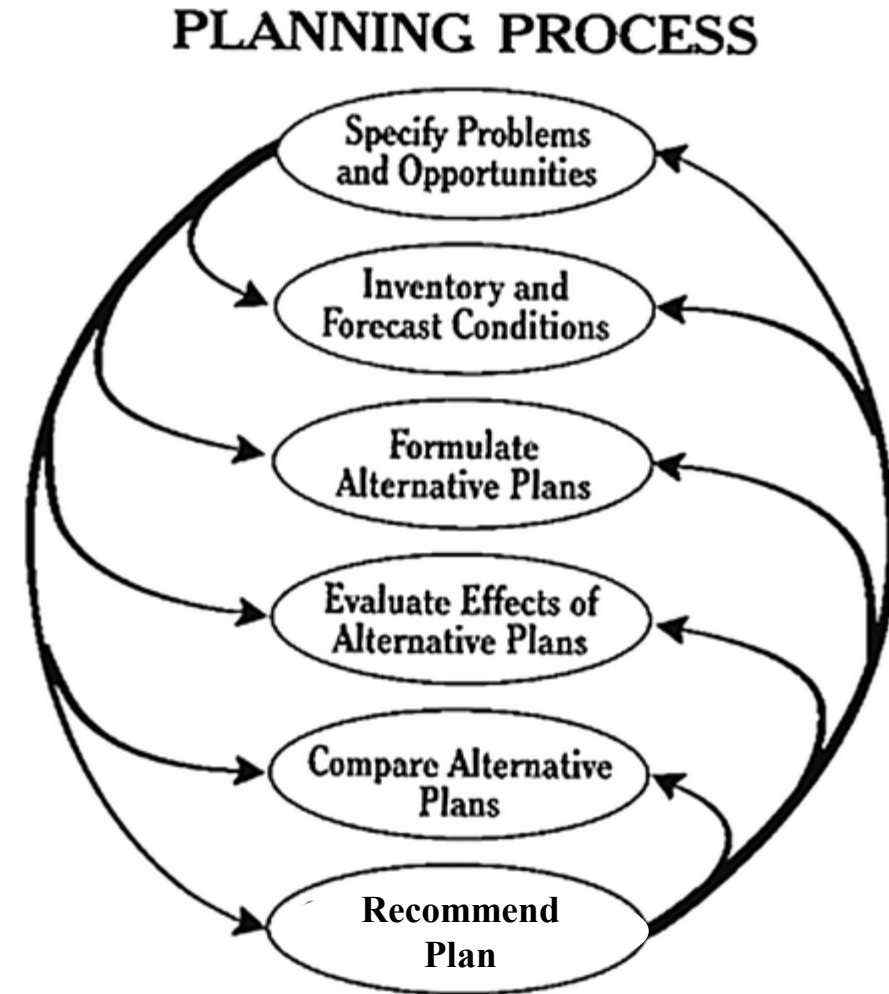
# Systemwide Evaluation

# Phase 2a Systemwide Evaluation: Relationship with FMP Phase 1 and 2



# Phase 2a Systemwide Evaluation: Overall Process

- Primary risk-informed decision-making tool for FMP Phase 2
- Leverages information developed in Phase 1 and existing Zone 7 resources
- Utilizes broadly accepted Six-Step Planning Process





# Phase 2a Systemwide Evaluation

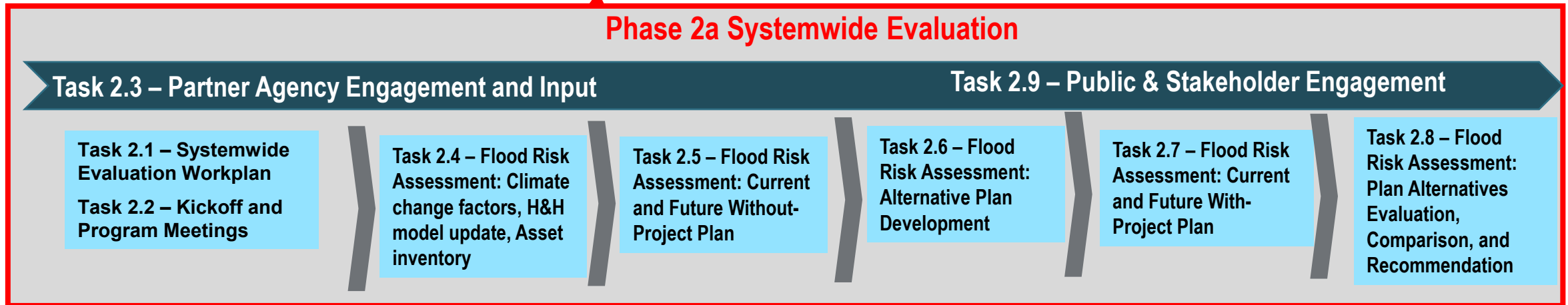
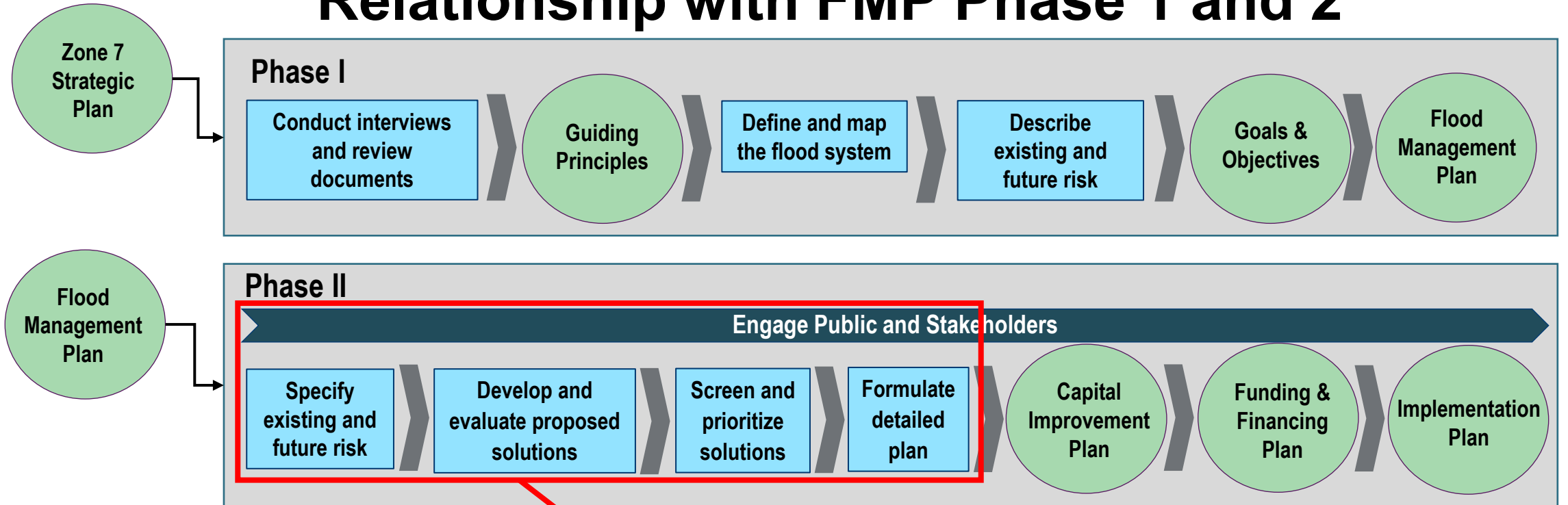
- Systemwide Evaluation Workplan
- Kickoff and Program Meetings
- Flood Risk Assessment
  - Input development
  - Evaluation of current and future without-project conditions
  - Alternative Plan Development
  - Evaluation of current and future with-project conditions
  - Plan Evaluation, Comparison, & Recommendation



Partner Agency  
Engagement  
and Input

Public &  
Stakeholder  
Engagement

# Phase 2a Systemwide Evaluation: Relationship with FMP Phase 1 and 2



# Proactive Maintenance Guidance

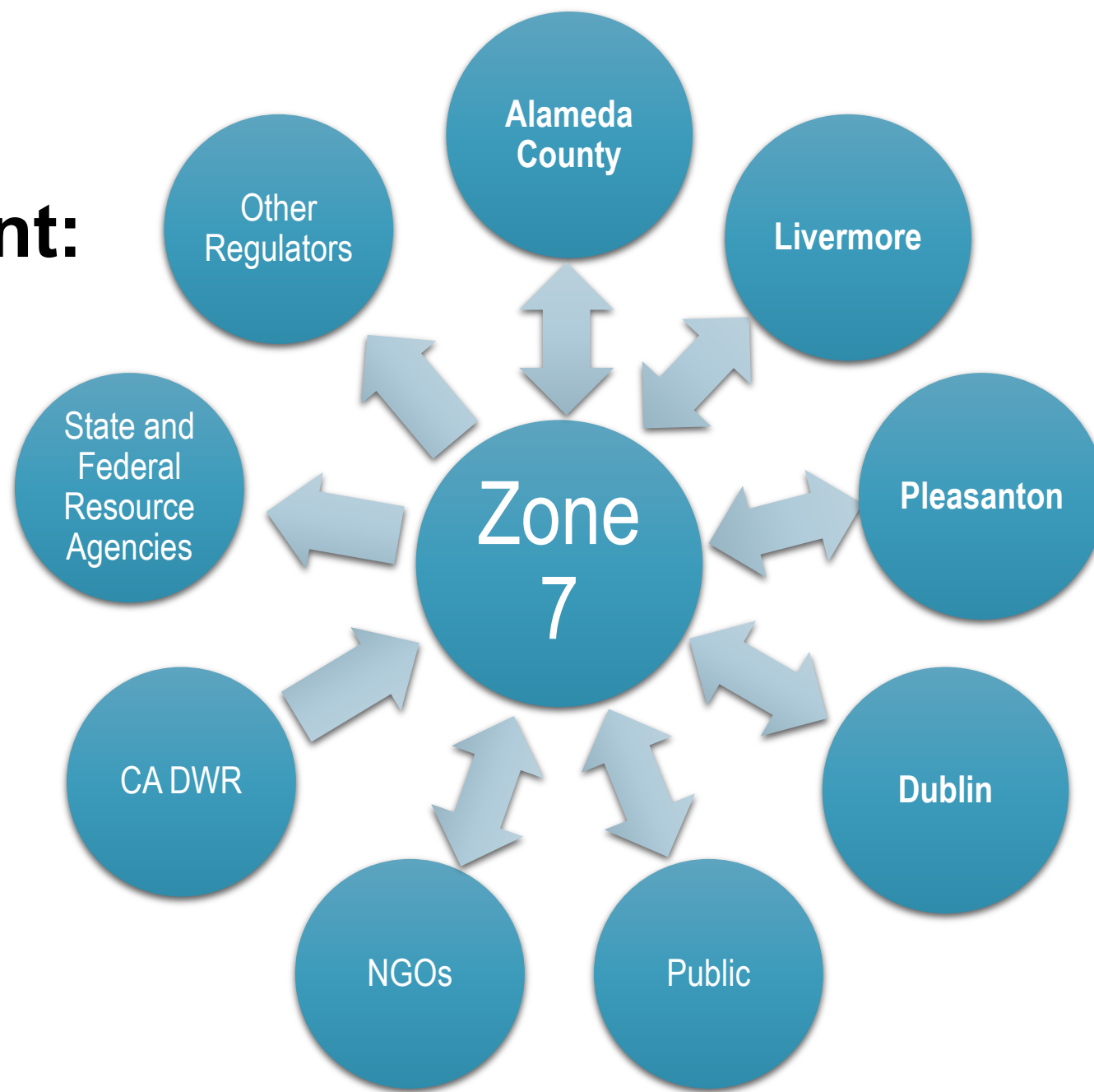
# Proactive Maintenance Guidance

- Addresses interim risk
- Proactive maintenance of channels prior to next high-water event
- PMG based on:
  - Geomorphic evaluation and historic performance
  - Risk informed decision-making
  - Existing and/or best available operating criteria until long-term plan implemented
- Internal “independent” review panel



# Stakeholder and Public Engagement

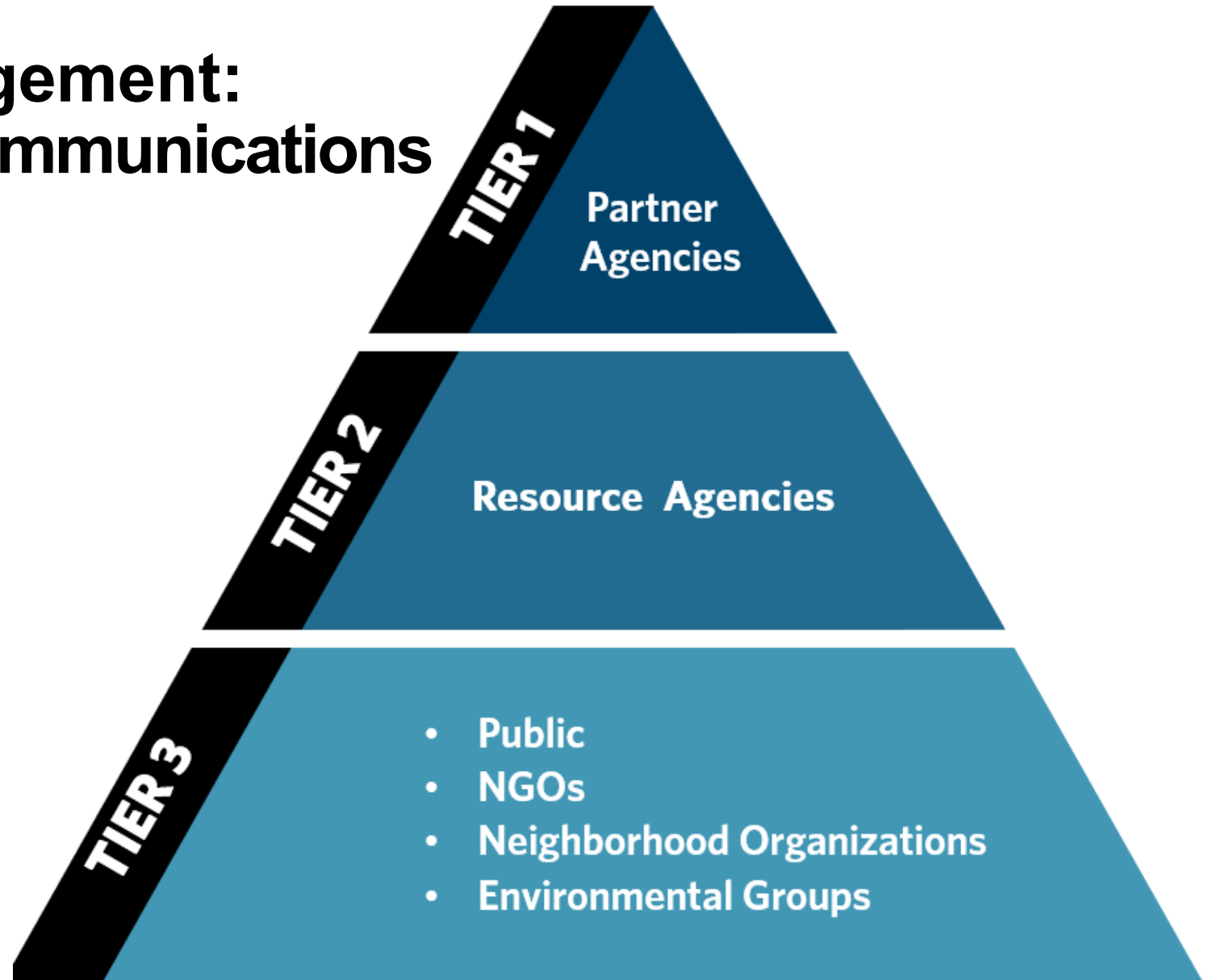
# Outreach and Engagement: Interested Parties



# Outreach and Engagement: Tiered & Strategic Communications

Begins at the top level  
and is **targeted**

As you move through the  
tiers, reach and use of  
tools **broadens**



# Outreach & Engagement: Tools





# FMP Phase 2a Schedule

Task / Description	2023			2024				2025
	Q2	Q3	Q4	Q1	Q2	Q3	Q4	Q1
<b>Task 1 – Project Management and Coordination</b>								
<b>Task 2 – Systemwide Evaluation</b>								
Task 2.1: Systemwide Evaluation Workplan Development								
Task 2.2: Zone 7 Staff Kickoff and Program Meetings								
Task 2.3: Partner Agency Engagement								
Task 2.4: Flood Risk Assessment – Input Development								
Task 2.5: Flood Risk Assessment – Current and Future Without-Project Plan								
Task 2.6: Alternative Plan Development								
Task 2.7: Current and Future With-Project Plan								
Task 2.8: Plan Alternatives Evaluation, Comparison, and Recommendation								
Task 2.9: Partner Agency, Public, and Stakeholder Briefing on SE Outcome								
Task 2.10: Draft and Final Report								
Task 2.11: Briefings to the Zone 7 Board and Committees*								
<b>Task 3 – Proactive Maintenance Guidance</b>								
<b>Task 4 – Stakeholder and Public Outreach and Engagement</b>								

\*C=Meet with Committee, B=Brief Board

# FMP Phase 2a Proposed Fee

Consultant	Description	Fee
HDR (detail in staff report)	HDR: Flood Management Plan Phase 2A (\$2,038,900 plus approximate 10% contingency)	\$2,242,800
Environmental Science Associates (ESA)	Hydrologic and Hydraulic modeling support Phase 2A (\$64,400 plus approximate 10% contingency)	\$71,000
Larsen Wurzel Associates (LWA)	Program and Project management Phase 2A (\$155,500 plus an approximate 10% contingency)	\$171,000
	<b>TOTAL</b>	<b>\$2,484,800</b>

IRWMP recently recommended grant award of \$827,500 to offset cost of Phase 2

**HDR**